

WHY **THERMOGRAPHY** IN PREDICTIVE MAINTENANCE?

Heat can be an early sign of equipment problems. Stop damage before it starts. Use thermal imaging cameras to measure and compare heat signatures – without halting production.

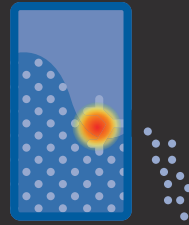
BEAT THE HEAT WITH THERMAL IMAGING



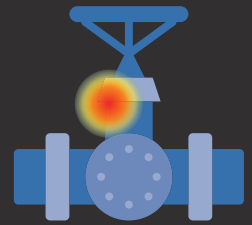
Monitor and measure bearing temps in motors or other rotating equipment



I.D. "hot spots" in electronic equipment



Find leaks in sealed vessels



Spot faulty insulation in process pipes or other insulated processes

5 STEPS FOR KEEPING YOUR COOL

- 1 Compile equipment lists (from a computer managed maintenance system (CMMS) such as Fluke Connect).
- 2 Cross off items not suited for infrared measurement.
- 3 Use a database or spreadsheet to group critical equipment together, by area or function, into 2-3 hour inspection blocks.
- 4 Review maintenance and production records.
- 5 Use a thermal imager to capture baseline images of each piece of critical equipment.



DID YOU KNOW?

Thermal imaging cameras are the **fastest growing** PdM technology in today's market.

A well-run PdM **30%-40%** over reactive maintenance.

("Reactive Maintenance" = Run it 'til it breaks - time & money.)

At typical manufacturing plants, a 10% reduction in maintenance costs can be equal to a **40% increase in revenue growth**. Cha-ching!



847-882-1198
support@linedriveu.com

